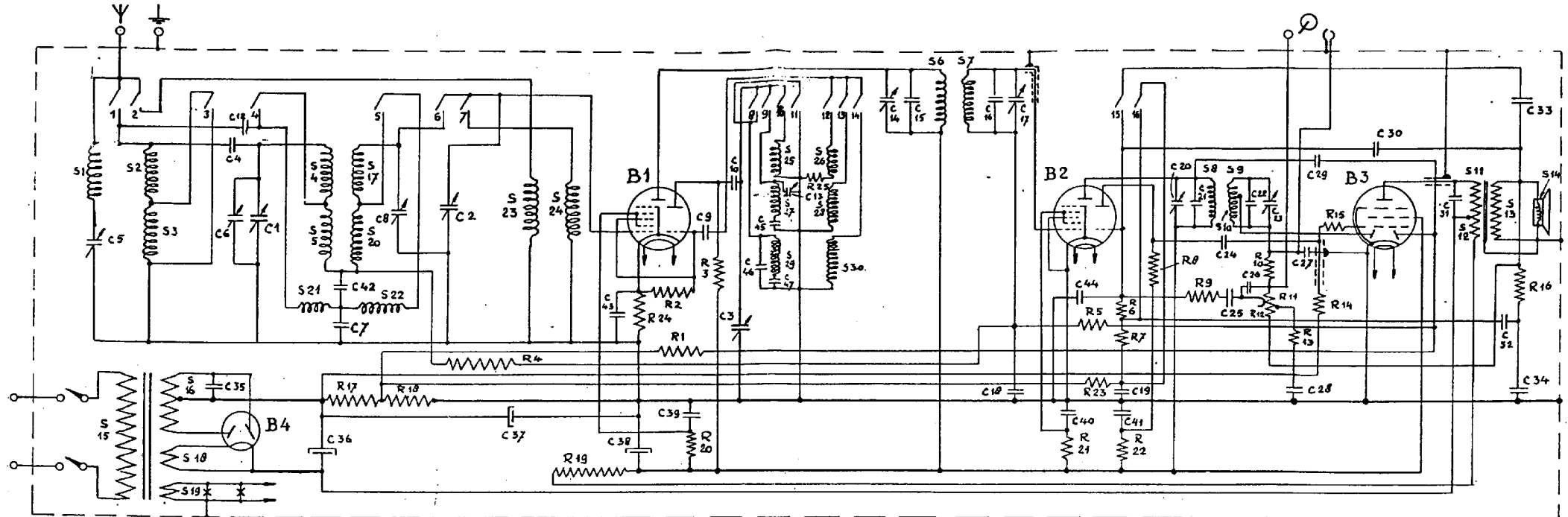
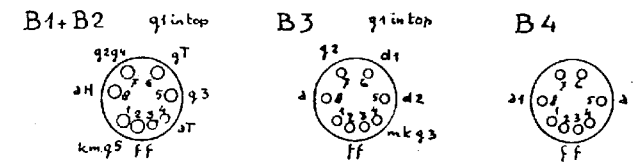


S	1, 15, 2, 3, 16, 18, 19	4, 5, 21, 17, 20, 22	23, 24	25, 27, 29, 26, 28, 30	6, 7	8, 9, 10	11, 12, 13, 14
C	5	35, 4, 6, 12, 1	36, 42, 7, 8	2	37	43, 38, 39, 9, 10, 3, 46, 45, 47, 13	14, 15, 16, 17, 12, 40, 44, 19, 41, 20, 21, 24, 25, 22, 26, 23, 28, 27, 29, 30, 31, 32, 33, 34
R		17, 18	4	19, 24, 2, 1, 20, 3	25	21, 5, 23, 6, 7, 22, 8	9, 10, 11, 12, 13, 14, 15, 16



CONDENSATOREN				WEERSTANDEN				S P O E L E N							
N°	WAARDE	N°	WAARDE	N°	WAARDE	N°	WAARDE	N°	WAARDE	N°	WAARDE	N°	WAARDE	N°	WAARDE
C1	11-490 pF	C25	10000 pF	R1	0,82 MΩ	R14	0,68 MΩ	S1	145 Ω	S9	30 Ω	S17	4,5 Ω	S25	<1 Ω
2	"	26	47 "	2	47000 Ω	15	1000 Ω	2	26 "	10	85 "	18	<1 "	26	1,5 "
3	"	27	56 "	3	22000 "	16	3300 "	3	85 "	11	780 "	19	"	27	8 "
4	10 "	28	22000 "	4	0,82 MΩ	17	68 "	4	4,5 "	12	20 "	20	40 "	28	3 "
5	200 "	29	6,8 "	5	"	18	39 "	5	48 "	13	1 "	21	1 "	29	32 "
6	32 "	30	3,3 "	6	1,5 "	19	1000 "	6	120 "	14	5 "	22	"	30	8,5 "
7	39000 "	31	1000 "	7	22000 Ω	20	47000 "	7	"	15	38,5 "	23	2,7 "		
8	32 "	32	22000 "	8	0,1 MΩ	21	"	8	"	16	27,5 "	24	<1 "		
9	56 "	33	47 "	9	0,47 "	22	0,1 MΩ								
10	470 "	34	82000 "	10	0,1 "	23	0,82 "								
12	39 "	35	22000 "	11	0,315 "	24	330 Ω								
13	32 "	36	32 pF	12	35000 Ω	25	39 "								
14	20 "	37	100 "	13	22000 "										
15	75 "	38	32 "												
16	68 "	39	47000 pF												
17	20 "	40	"												
18	47000 "	41	0,14 pF												
19	0,1 pF	42	12000 pF												
20	20 pF	43	47000 "												
21	68 "	44	180 "												
22	68 "	45	1450 "												
23	20 "	46	33 "												
24	10000 "	47	410 "												

	1	2	3	4	5	6	7	8	9	10	11	12	13	14
K	•				•		•				•			
M	•	•	•	•	•				•	•		•		
L	•				•		•							•



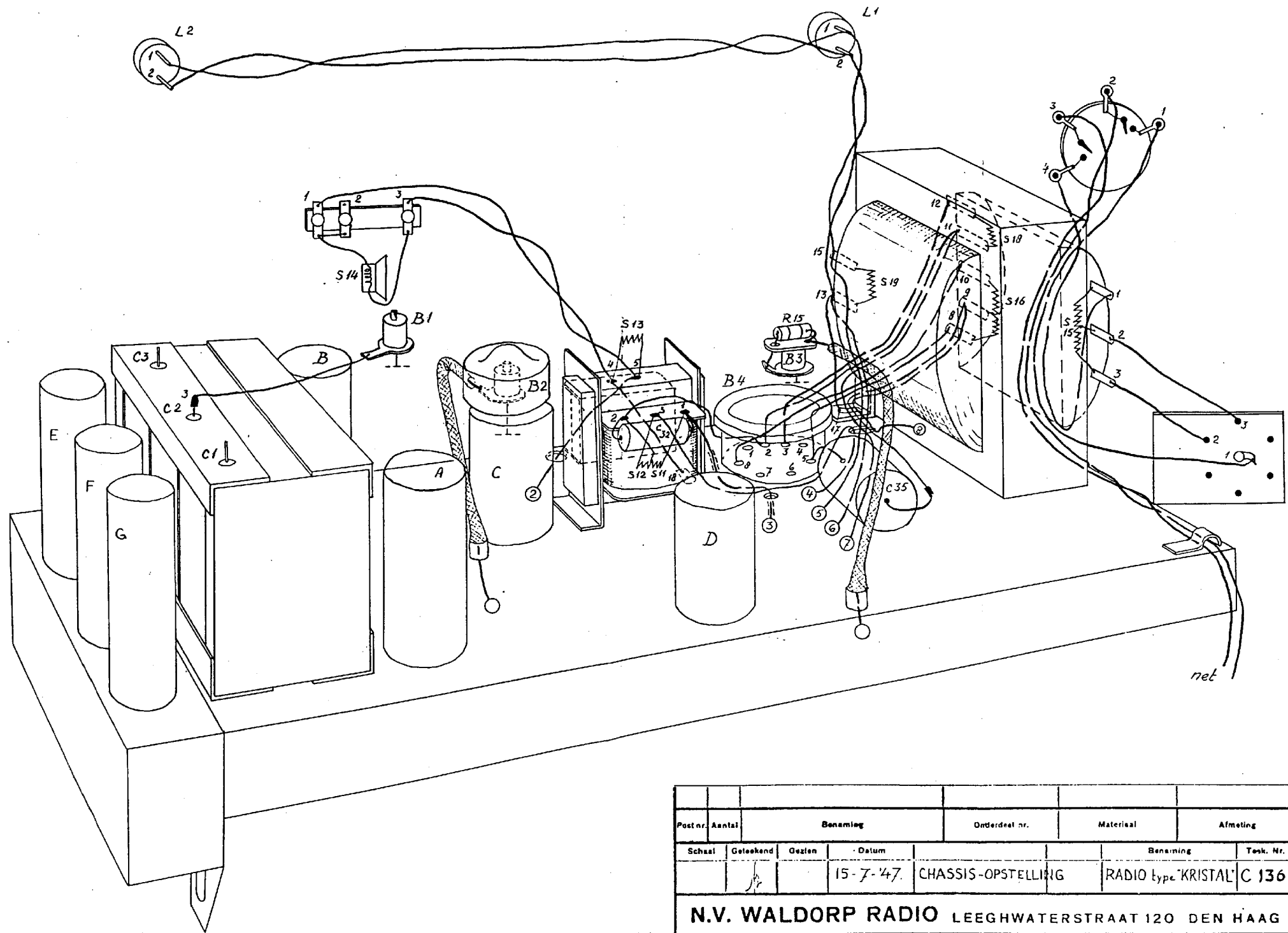
		V <sub>a</sub>	V <sub>g2</sub> (+4)	I <sub>a</sub>	I <sub>g2</sub> (+4)
B1	triode	115		3,5	
	heptode	185	95	1,3	2,6
B2	triode	40		0,8	
	heptode	185	113	3,7	2,5
B3	penthode	175	175	31	4
		Volt	Volt	mA	mA

VC1 = 205 V  
 VC2 = 105 V  
 OPGENOMEN  
 NETSTR. I = 185 mA bij 220 V.  
 GEMETEN MET EEN VOLTMETER  
 VAN 2000 Ω/V.

Postnr.	Aantal	Benaming	Onderdeel nr.	Material	Afmeting
Schaal	Getekend	Gezien	Datum	Benaming	Teek. Nr.
			27-6-'47	RADIO type "KRISTAL"	C 135

N.V. WALDORP RADIO LEEGHWATERSTRAAT 120 DEN HAAG





Post nr.	Aantal	Benaming	Orderdeel nr.	Materiaal	Afmeting
Schaal	Geleekend	Gezeten	Datum	Benaming	Task. Nr.
			15-7-'47.	CHASSIS-OPSTELLING	RADIO type "KRISTAL" C 136

N.V. WALDORP RADIO LEEGWATERSTRAAT 120 DEN HAAG